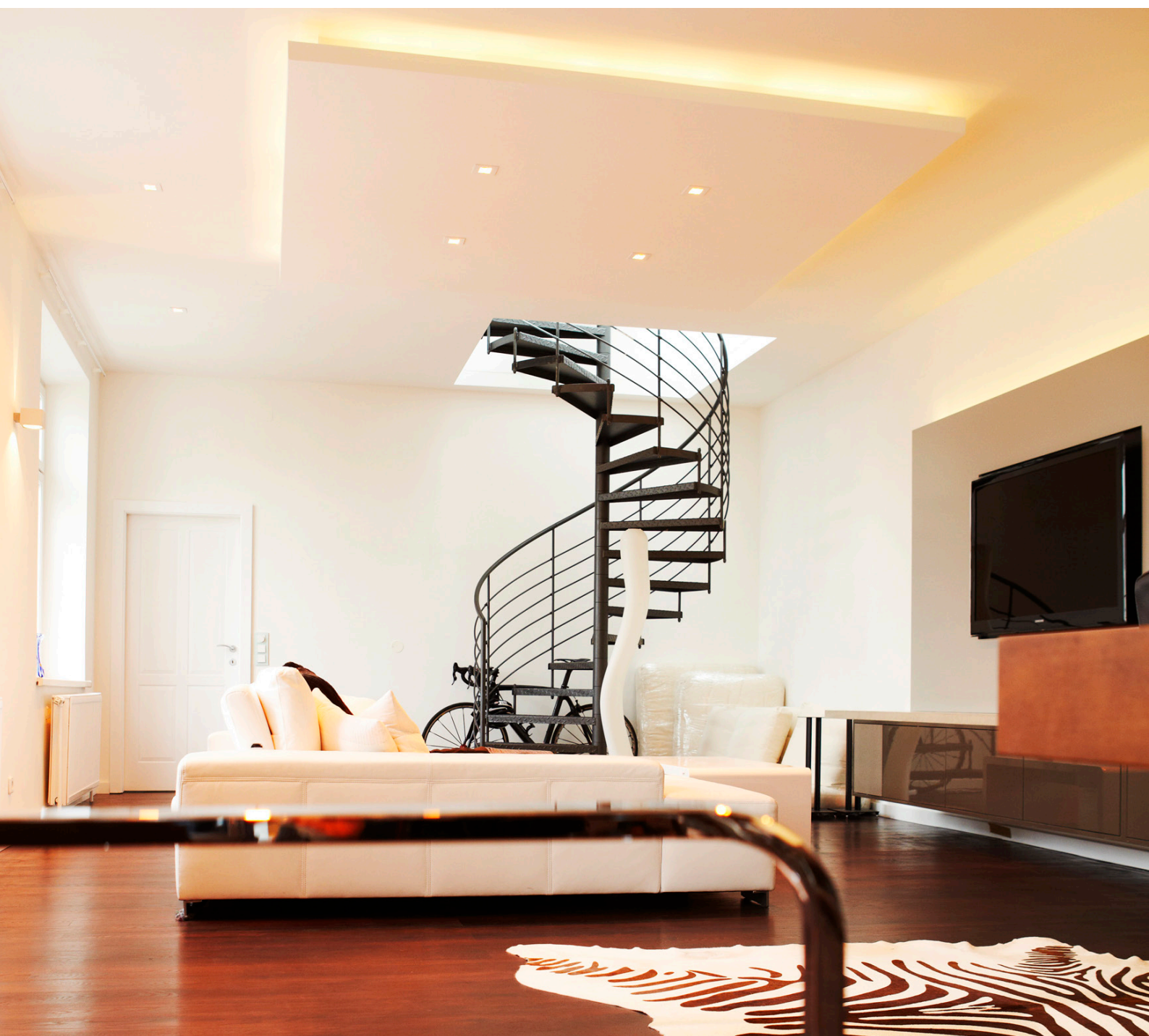


# K-SPOT FLAT

## THE NEXT GENERATION OF THE BIORHYTHMIC ALLROUNDER

- Compact and timeless design
- Small construction size and small construction height (48 mm)
- Functionality: Colour temperature 1,800 K – 16,000 K
- High colour stability from micro-controller controlled LED management with temperature compensation and factory calibration
- High optical efficiency due to integrated anti-glare reflectors
- Soft light mixing and uniform light distribution
- Integrated aluminium heat sink
- Operating temperature monitoring with automatic dimming function
- Mounting: Flush-mounted
- Tool-free mounting, using two fixing spring clips for 1–15 mm ceiling thickness



Environment  
friendly



Low  
consumption



Long  
service life



Tunable  
White



Brightness  
dimmable



RGB  
adjustable

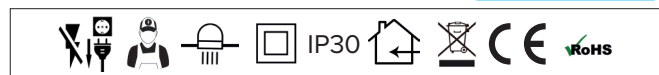
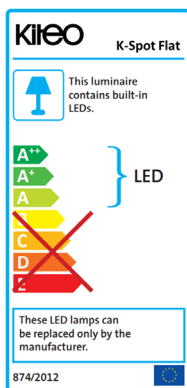


Excellent  
CRI

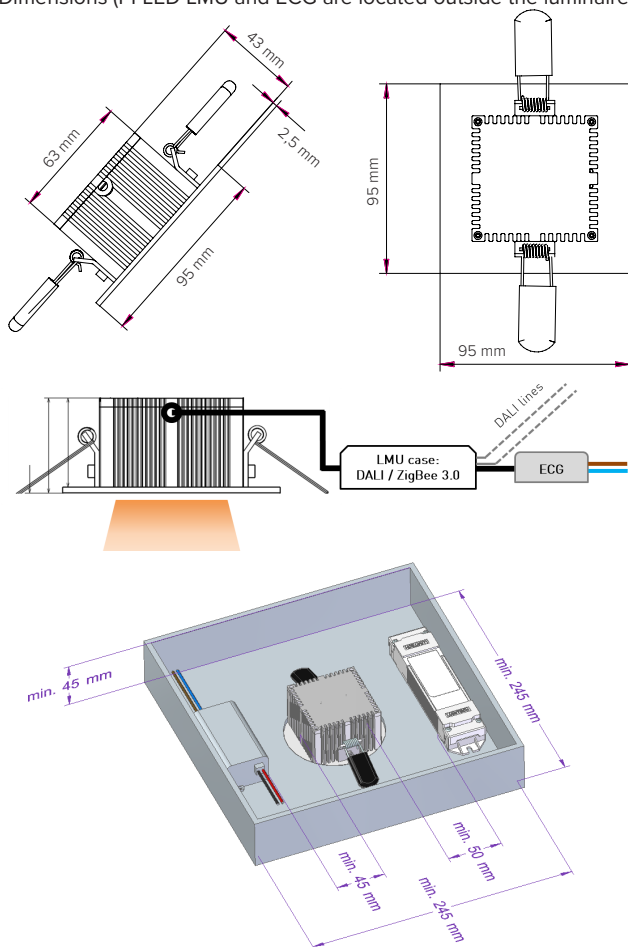
# TECHNICAL DATA

## K-SPOT FLAT Recessed luminaire

Luminous source	LED module <b>PI-LED</b>
Connected load	14 W
Luminous flux	880 lm
Colour temperature	1,800 K–16,000 K
CRI	90
Protection category	IP 30
Dimming range	1%–100%
Service lifetime	L80/B10 50,000h
Tests / approvals	CE / RoHS conformity
Weight	0.4 kg
Operating voltage	230 VAC (incl. ext. converter)
Control mode	ZigBee 3.0 DALI DT8
Protection class	II
Mounting	Flush-mounted



Dimensions (PI-LED LMU and ECG are located outside the luminaire)

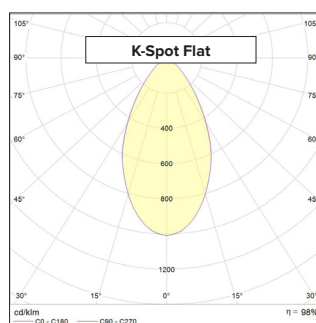


CCT [K]	VISUAL DATA	MELANOPIC ACTION FACTOR
	luminous flux [lm]	alpha [smel]
1,800	560	0.228
2,000	660	0.253
2,500	930	0.326
2,700	915	0.358
3,000	880	0.406
3,500	855	0.481
4,000	830	0.550
4,500	820	0.612
5,000	805	0.668
5,500	805	0.718
6,000	805	0.763
6,500	795	0.803
7,000	795	0.838
8,000	795	0.899
9,000	770	0.947
10,000	720	1.000
12,000	660	1.111
14,000	610	1.220
16,000	585	1.323

## ORDER DATA

Art. No.	Luminaire*
K-DL-FLAT531	K-Spot Flat recessed luminaire / PI-LED / ZigBee 3.0 / White RAL 9003
K-DL-FLAT534	K-Spot Flat recessed luminaire / PI-LED / ZigBee 3.0 / Brushed aluminium
K-DL-FLAT831	K-Spot Flat recessed luminaire / PI-LED / DALI DT8 / White RAL 9003
K-DL-FLAT834	K-Spot Flat recessed luminaire / PI-LED / DALI DT8 / Brushed aluminium

Art. No.	Accessories (available from October 2019)
K-Z1000270	IP44 protective cover K-SPOT FLAT / White RAL 9003
K-Z1000271	IP44 protective cover K-SPOT FLAT / Brushed Aluminium



- \* All product are designed with PI-LED LMU 2.0 and include the following features:
- Modular Dimming / „Camera Ready“
  - ZigBee 3.0 (from September 2019) including Over-The-Air updates (from January 2020)
  - DALI 1 registration and DALI DT8 including Over-The-Bus updates (from September 2019)
  - LMU case with strain relief

**Notes**  
The photometric data of a tolerance of +/- 15%, the electrical data of a tolerance of +/- 15%. Unless otherwise specified, the values are based on 3,000K and an ambient temperature of 25°C. Permissible operating temperature 10°C - 35°C. The manufacturer reserves the right to change any product specification without prior notice. CCT values outside the range 2,500-7,000K can be set in the CIE-xy mode. The coefficient alpha(smell) describes the melatonin effectiveness of the light source on humans and their circadian rhythm. To give the natural human biorhythm the best possible support, the melatonin production can be minimized by higher values of alpha(smell) throughout the day and stimulated by lower values in the evening. PI-LED enables the implementation of an illumination that is not only visually but also biologically/melanopic effective. For a standard-conforming lighting design, Lumitech recommends the document DIN SPEC 5031-100 to be taken as a basis. More documents can be found at [www.kiteo.eu](http://www.kiteo.eu).  
Last change: 17.06.2019